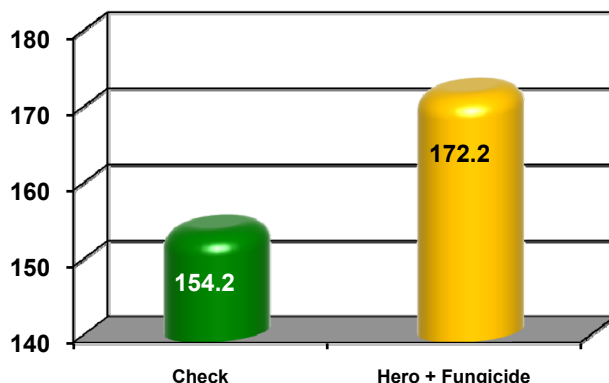


# Corn Insect Control

# HERO

INSECTICIDE

**Excellent Broad Spectrum Insecticide/Miticide That Can Be Tank Mixed With Post Herbicides, Fungicides & Foliar Fertilizers**



**Corn Plant Health Treatments  
2007 FMC Grower Trials**

## APPLICATION RECOMMENDATIONS

### Field, Seed, Popcorn

- 2.6 – 6.1 oz** Cutworms, western bean cutworm, stalk borer, grasshoppers
- 4.0 – 10.3 oz** Aphids, armyworms, rootworm adults, European corn borer, Japanese beetle adults, southwestern corn borer, southern corn leaf beetle
- 10.3 oz** Banks grass mite, carmine mite, two-spotted spider mite

Use a minimum of 2 gallons of finished spray per acre by air or 10 (20 for sweet corn) gallons of finished spray per acre by ground.

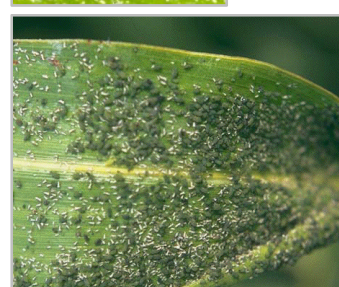
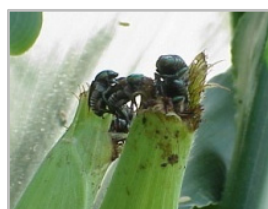
### Maximum Rate:

41.2 oz/acre per season (field, seed, popcorn)

27.4 oz/acre per season (sweet corn)

### 12 hours REI

**Preharvest Interval:** Sweet corn – 3 days  
Field, seed, popcorn – 30 days grain and stover; 60 days for forage



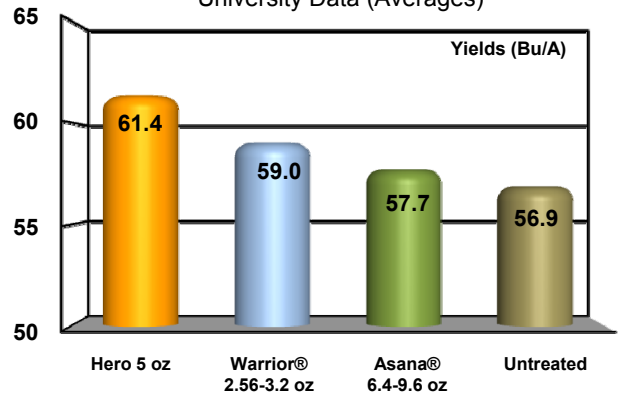
# Soybean Insect Control



**Delivers Maximum Soybean Insect Control and Yield Protection**



**2006-07 Soybean Aphid Yield Data**  
University Data (Averages)



## Application Recommendations

### 2.6 – 6.1 oz

Bean leaf beetle, cutworms, flea beetle, grasshoppers, green clover worm, thistle caterpillar, silverspotted skipper

### 4.0 – 10.3 oz

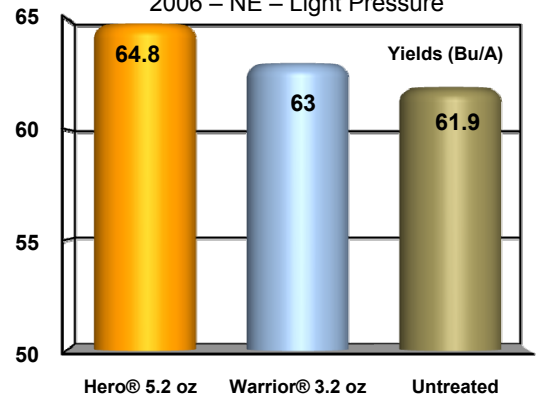
Alfalfa caterpillar, armyworms, blister beetle spp., corn rootworm (adults), dectes stem borer, Japanese beetle (adults), leafhoppers, loopers, Mexican bean beetle, soybean aphid, stink bug, woollybear caterpillar

### 10.3 oz

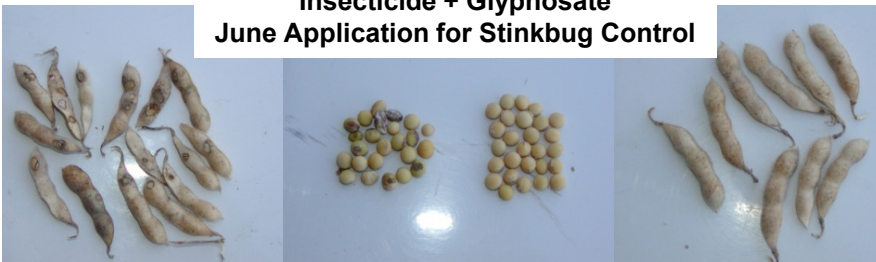
Two spotted spider mite

## Bean Leaf Beetle Control

2006 – NE – Light Pressure



## Commercial Field – MO Insecticide + Glyphosate June Application for Stinkbug Control



Untreated - 56 Bu/A

Treated - 64 Bu/A

## Special Information:

- 21 day PHI, 12 hour REI
- Do not apply more than 0.4 lb ai/A per season, or 41 oz/A.
- Use a minimum of 2 gallons of finished spray per acre by air or 10 gallons of finished spray per acre by ground.
- Do not graze or harvest treated soybean forage, straw, or hay for livestock feed.

Always read and follow label directions. Hero is a restricted use pesticide. FMC and Hero are trademarks of FMC Corporation. Asana is a trademark of E.I. du Pont de Nemours & Co. Warrior is a trademark of Syngenta Group Co. © 2008 FMC Corporation. 1-888-59-FMC-AG • FMCcrop.com

